



Buy it for looks. Buy it for life.®

Specifications

DESCRIPTION

- Metal and/or ceramic construction
- 1/2" CC or IPS connections
- Includes adjustable 3-function showerhead, arm, flange & tub spout

OPERATION

- Flow handle (lever) operates counterclockwise through a 180° arc with off at 6 o'clock and maximum flow at the 12 o'clock position. Shut off in clockwise direction
- Temperature handle (knob) operates through a 340° arc with maximum cold at full clockwise rotation (corresponding to the numeral 1) and maximum hot at full counterclockwise rotation (corresponding to the numeral 9)
- Thermostatic pressure balancing mechanism maintains selected discharge temperature to ± 3°F
- Factory established temperature range from 85°F (29°C) to 115°F (46°C)

FLOW

- Showerhead is limited to 2.5 gpm (9.5 L/min)

CARTRIDGE

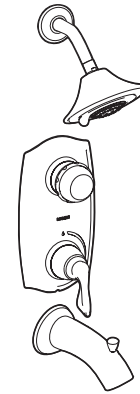
- Thermostatic pressure balancing cartridge design with non-metallic/nonferrous materials
- 1248 cartridge design with nonmetallic/nonferrous and stainless steel materials

STANDARDS

- Third party certified by CSA to meet CSA B-125, ASME A112.18.1M and all applicable requirements referenced therein including ASSE 1016

WARRANTY

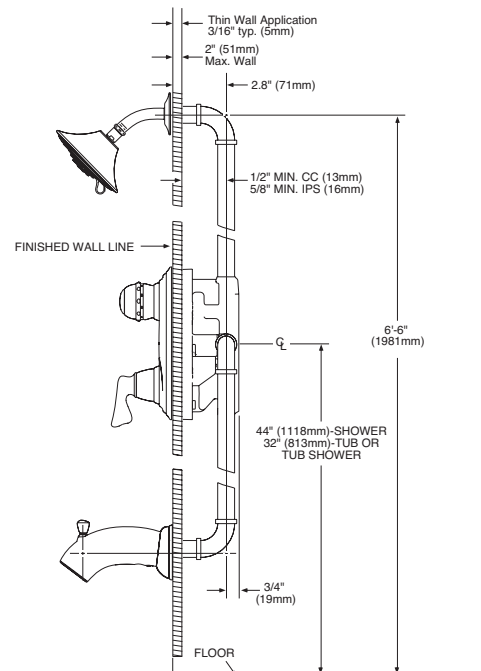
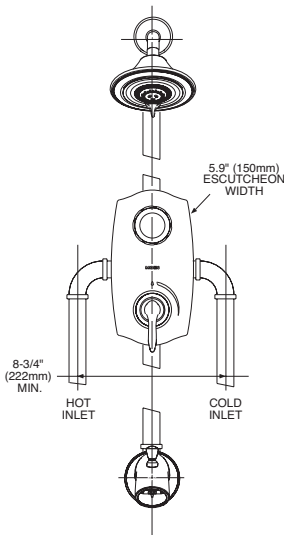
- Lifetime limited warranty against leaks, drips and finish defects to the original consumer purchaser
- 5 year warranty if used in commercial installations



ASCERI™ COLLECTION ExactTemp™ Tub/Shower (Trim Only)

Models: T3431, T3431CP, T3431CPM, T3431STV, T3431NLBL, T3431CGPC

Valves: 3301 (CC), 3321 (IPS)



CRITICAL DIMENSIONS

(DO NOT SCALE)