



## Operating a Faucet without a Handle

Operating Instructions



Tool needed: Standard Pliers



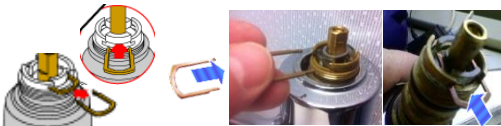
### Identifying and Operating

Use the photos below to identify your faucet's cartridge type and move to the appropriate step.



#### Brass or Chrome Stem

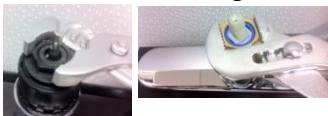
1. If the cartridge has been removed, insure it is fully seated in the valve body and the cartridge clip has been reinstalled.



2. Spout: Make sure the spout body has been fully seated.



3. Make sure the retainer nut is on and tightened.



#### Silver and Black Stem

1. If the cartridge has been removed, insure it is fully seated in in the valve body.



2. Spout: Make sure the spout body has been fully seated.



3. Make sure the retainer nut is on and tightened.



#### White and Blue Stem

1. If the cartridge has been removed, insure it is fully seated in in the valve body.



2. Spout: Make sure the spout body has been fully seated.



3. Make sure the retainer nut is on and tightened



4. **Operating without a handle:** Pull the brass stem of the cartridge to turn the faucet on. Push in to turn off.



5. **Controlling water temperature:** Rotate the brass stem clockwise for hot water or counter-clockwise for cold water. If you have used locking pliers like Vice Grips, you can leave the locking pliers on the brass stem and use this as a temporary handle.

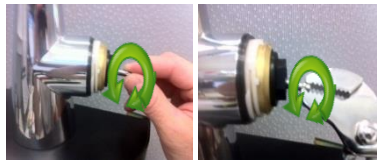


**You are all done!**

4. **Operating without a handle:** Push the silver stem backwards to turn the faucet on. To turn the faucet off, move the stem forward.



5. **Controlling water temperature:** Rotate the silver stem clockwise for hot water or counter-clockwise for cold water. If you have used locking pliers like Vice Grips, you can leave the locking pliers on the silver stem and use this as a temporary handle.



**You are all done!**

4. **Operating without a handle:** Push the silver stem backwards to turn the faucet on. To turn the faucet off, move the stem forward.



5. **Controlling water temperature:** Rotate the white stem clockwise for hot water or counter-clockwise for cold water. If you have used locking pliers like Vice Grips, you can leave the locking pliers on the white stem and use this as a temporary handle.



**You are all done!**